

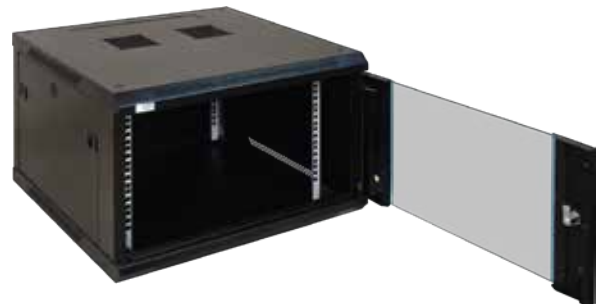
Instruction Manual

iL C604

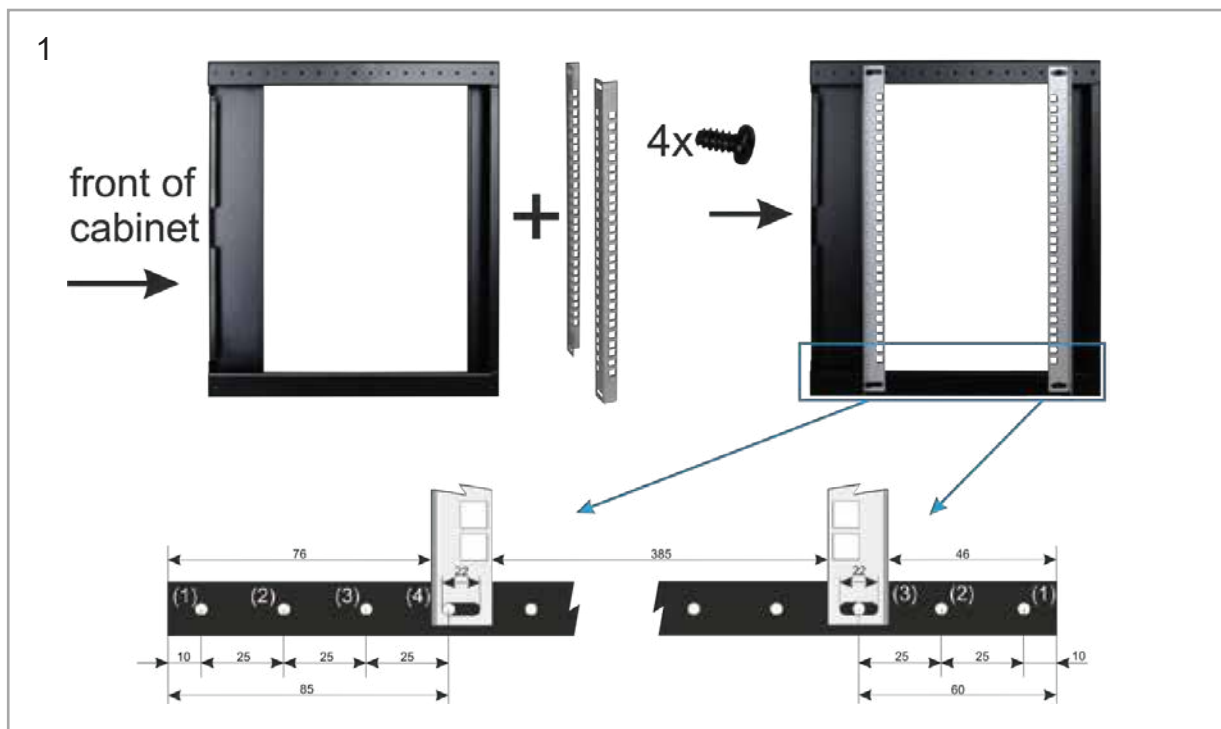
6U WALL MOUNT RACK



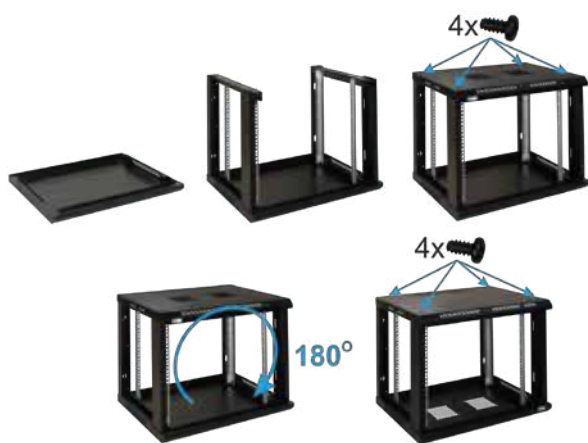
SPECIFICATIONS	
Model	iL-C604
External dimensions:	W=600, H=450, D=350 [mm, +/-2]
Materials & Accessories:	4 Pcs of mounting profile +1 Pcs shelf+high tempered glass front door
Features:	<ul style="list-style-type: none">- adjustable distance between front and rear RACK rails- ventilation holes in the top panel- extra 1 pcs shelf- lockable front door – (2 keys included)- possibility of reverse front door – opening left/right- side panels - lock assembly possible- possibility of disassembly rear panel- ready-to-assemble



Assembling instructions



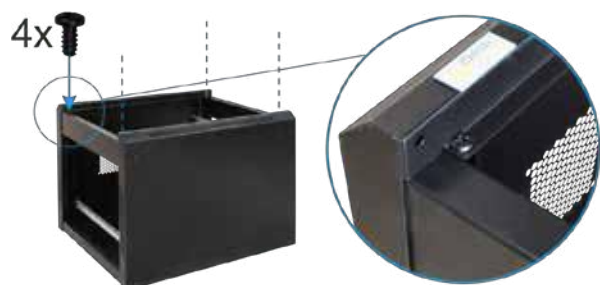
2



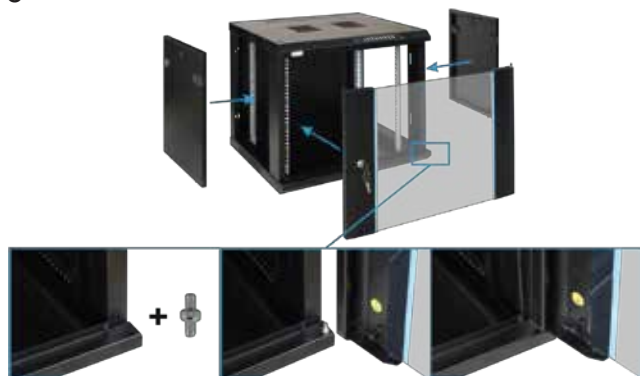
3



4



5



6

